

How to Install and Operate Oral SPA Cleaner and Flosser

1. Install Inner Compartment

- 1.1 Put in Ameba Adaptor as shown in picture. (whereby the Contact Plate is away from Battery)
- 1.2 Put in an AA Battery in direction as shown in picture.
- 1.3 Insert Battery Spring into Battery Cap.
- 1.4 Lock Battery Cap onto Inner Compartment.

2. Install Ameba Sonic Arm

- 2.1 Insert Pin Spring onto one of the Contact Pins of Ameba Sonic Arm.
- 2.2 Insert Ameba Sonic Arm Contact Pin (without Pin Spring) into hole of Ameba Adaptor with Contact Tongue.
- 2.3 Mount the outer Compartment onto Ameba Sonic Arm make sure that the pins of Ameba Sonic Arm are firmly in holes of Ameba Adaptor. (vibration begins)
- 2.4 Lock Outer Compartment onto Inner Compartment by clockwise twisting until complete lock. (vibration stops)
- 2.5 Insert water Resistant Cap and Friction Grip Band work as shown in picture.

3. Operate Ameba Oral SPA Cleaner

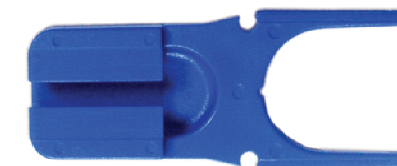
- 3.1 Mount a cleaning head onto the locking tip by aligning the head opening to the locking tip and push in.
- 3.2 Anti-clockwise twisting until Ameba Oral SPA Cleaner works.
- 3.3 Clockwise twisting will stop Ameba Oral SPA Cleaner.
- 3.4 To detach the head, twist the connected head and pull out.
- 3.5 Keep Ameba Oral SPA Cleaner idle by clockwise twisting until complete lock.

4. Operate Ameba Oral SPA Flosser

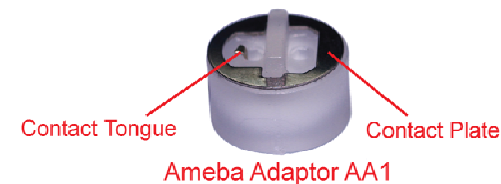
- 4.1 Mount a soft grip onto your middle finger.
- 4.2 Tie a floss-ring round the floss holder groove.
- 4.3 Pull the floss-ring firmly with your middle finger. (where the floss-ring is hold at the soft grip to avoid finger injury)
- 4.4 Move the floss line at holder groove into interdental gaps by 45° vertically. (floss line against tooth surface)
- 4.5 Let the vibrating floss line works in the interdental gaps by itself with no finger acrobat.
- 4.6 Move the floss line out of interdental gap by 45° vertically also.

5. Caution to observe

- 5.1 Do not apply pressure while cleaning teeth. It is 'touch and clean' by moving along the teeth surface.
- 5.2 If you are presently experiencing any problems with your teeth/gums or are undergoing dental treatment, please consult with your dentist before using this product.
- 5.3 Do not leave this product near heat sources such as electric heater, stove, furnaces or in places exposed to direct sunlight.
- 5.4 Do not use in this product for any other purpose other than teeth cleaning and flossing.
- 5.5 For prolonged period of non-usage, please remove the battery.
- 5.6 Battery life depends on the date of manufacture, manufacturers and the time when actually put into use.
- 5.7 Worn battery should be removed immediately and replaced with a new one.
- 5.8 Please keep this information handy where it can be easily reviewed by any user.



AFH2 Ameba dental floss holder
Ameba Detachable dental floss holder suitable for 1 line flossing, 2 line flossing, or cross-line flossing.



Contact Tongue
Contact Plate
Ameba Adaptor AA1



G99T (hard cleaning)
G77T (gentle cleaning)
G55R
N55R (soft cleaning)

All parts are patented and available for sale.

Ameba Products (M) Sdn. Bhd. (490161D)

www.oralspa.com
Tel: +603 40241668 Fax: +603 40233133 Email: sales@oralspa.com

